



**KINGSLY ESTATE AGENTS**

**2 Bedroom Flat for Sale - £330,000**

Dalrympie Close, Southgate, London, UK, N14 4LQ



• TWO BEDROOM • LEASEHOLD • EPC RATING D • COUNCIL TAX BAND D

☎ 02088 844 844

✉ info@kingsly.group

📍 315 Chase Road, Southgate, London N14 6JT

👉 kingsly.group



Reg. Company: Kingsly Estate Agents Limited. Reg. Number: 15835275  
Reg. Address: 5 Braemore Court, Cockfosters Road, Barnet, EN4 0AE, England



## Description

Kingsly Estate Agents are delighted to offer to the market this well presented two bedroom flat. This cosy property benefits from two bedrooms, family bathroom, spacious living room connected to fitted kitchen. This property is an ideal investment opportunity or an ideal purchase for first time buyers.

## Location

This property is situated in an ideal location with excellent transport links which include Southgate Underground Station (Piccadilly Line) (0.4 Miles) Oakwood Underground Station (Piccadilly Line) (0.7 Miles), offering direct access into central London. Also just a short walk from Chase Road which has a vast array of shops, restaurants, bars and supermarkets. The property is also in close proximity to a number of good performing schools: Wolfson Hillel Primary School Ofsted: Outstanding (0.1 miles) West Grove Primary School Ofsted: Good (0.1 miles) St Andrew's Southgate Primary School Ofsted: Good (0.3 Miles)



☎ 02088 844 844

✉ info@kingsly.group

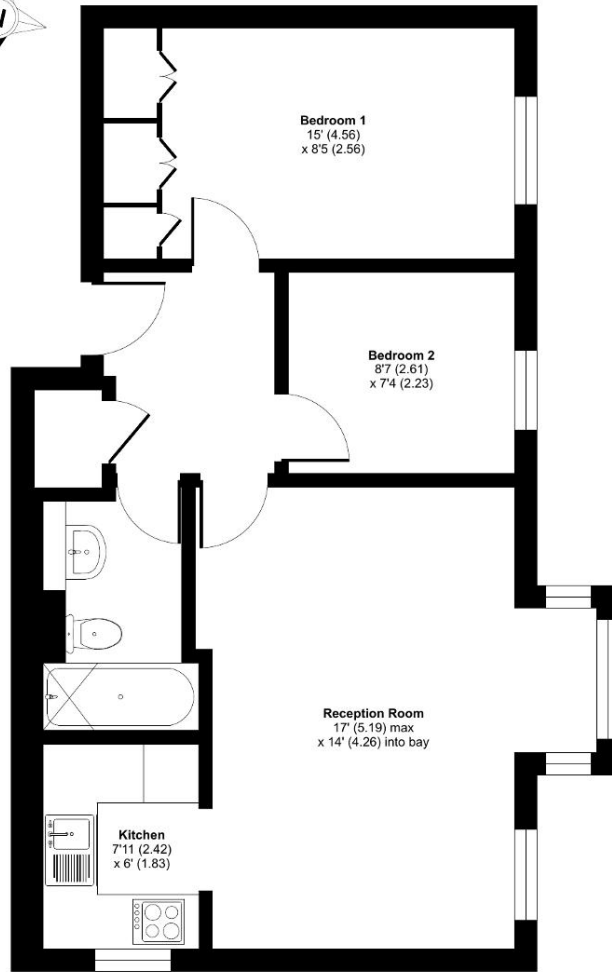
📍 315 Chase Road, Southgate, London N14 6JT

👉 kingsly.group



### Dalrymple Close, London, N14

Approximate Area = 563 sq ft / 52.3 sq m  
For identification only - Not to scale



SECOND FLOOR

Floor plan produced in accordance with RICS Property Measurement 2nd Edition, Incorporating International Property Measurement Standards (IPMS2 Residential). © nrichcom 2025. Produced for Kingsly Estate Agents, Southgate. REF: 1248181

Score	Energy rating	Current	Potential
92+	A		
81-91	B		
69-80	C		77 C
55-68	D	57 D	
39-54	E		
21-38	F		
1-20	G		

☎ 02088 844 844

✉ info@kingsly.group

📍 315 Chase Road, Southgate, London N14 6JT

👉 kingsly.group

