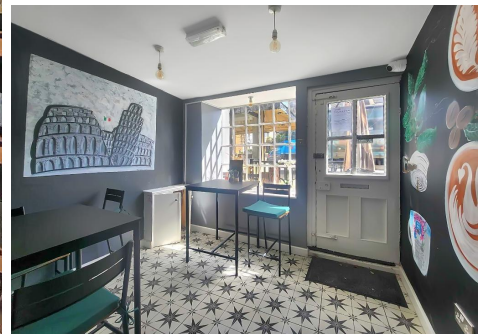




KINGSLY ESTATE AGENTS

Commercial for Sale - Offers in Excess of £700,000

High Street, Ongar, Essex, CM5 9JD



- GARDE II LISTED • FREEHOLD • EPC RATING C FOR THE COMMERCIALS • EPC RATING G & F FOR THE FLATS • COUNCIL TAX BAND C & B • ONE BEDROOM 42.3 SQM FLAT • TWO BEDROOM 73.5 SQM FLAT

☎ 02088 844 844

✉ info@kingsly.group

📍 315 Chase Road, Southgate, London N14 6JT

🌐 kingsly.group



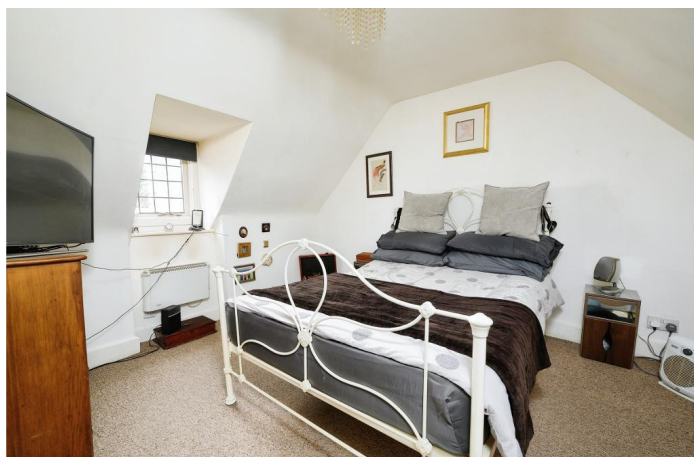
Reg. Company: Kingsly Estate Agents Limited. Reg. Number: 15835275
Reg. Address: 5 Braemore Court, Cockfosters Road, Barnet, EN4 0AE, England

Description

The building consists of a Grade II listed property two ground floor commercial units and two flats in the upper. Positioned prominently within the High Street, they are conveniently located near other industrial retailers, restaurants, the library, and the post office. Each unit includes a forecourt at the front and parking at the rear, accessible from behind.

Current rents achieved is £50,000 per annum.

Viewings are strictly by appointment with the agent.



☎ 02088 844 844

✉ info@kingsly.group

📍 315 Chase Road, Southgate, London N14 6JT

👉 kingsly.group



Reg. Company: Kingsly Estate Agents Limited. Reg. Number: 15835275
Reg. Address: 5 Braemore Court, Cockfosters Road, Barnet, EN4 0AE, England



☎ 02088 844 844

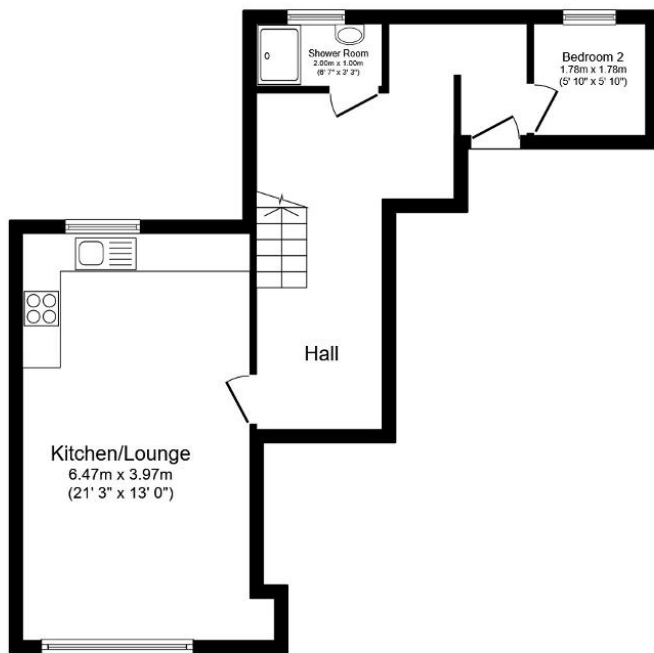
✉ info@kingsly.group

📍 315 Chase Road, Southgate, London N14 6JT

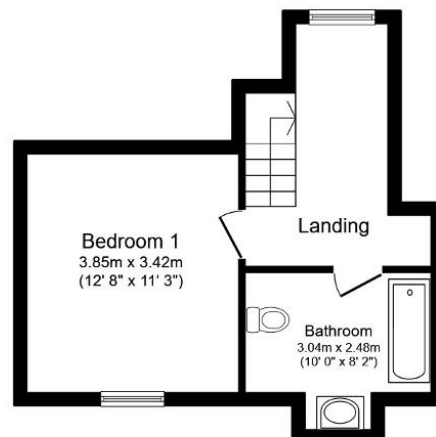
👉 kingsly.group



Reg. Company: Kingsly Estate Agents Limited. Reg. Number: 15835275
Reg. Address: 5 Braemore Court, Cockfosters Road, Barnet, EN4 0AE, England



Ground Floor



First Floor

Total floor area 73.5 sq.m. (791 sq.ft.) approx

This floor plan is for illustrative purposes only. It is not drawn to scale. Any measurements, floor areas (including any total floor area), openings and orientation are approximate. No details are guaranteed, they cannot be relied upon for any purpose and they do not form part of any agreement. No liability is taken for any error, omission or misstatement. A party must rely upon its own inspection(s). Powered by www.focalagent.com



Total floor area 42.3 sq.m. (456 sq.ft.) approx

This floor plan is for illustrative purposes only. It is not drawn to scale. Any measurements, floor areas (including any total floor area), openings and orientation are approximate. No details are guaranteed, they cannot be relied upon for any purpose and they do not form part of any agreement. No liability is taken for any error, omission or misstatement. A party must rely upon its own inspection(s). Powered by www.focalagent.com

